

# INTRODUCING DATA TOUCH

Ultimate Solution for  
Secure Data Tracking  
and Analysis.

Effectively tracking sensitive data is pivotal for safeguarding personal information and mitigating data misuse cases, particularly within extensive data repositories where sensitive data can be challenging to monitor. To address this challenge, a robust solution is essential for ensuring the meticulous tracking of sensitive data. Introducing Data Touch (DT), a cutting-edge tool seamlessly integrated with database discovery and activity monitoring applications, harnessing the combined insights from both platforms. Data Touch empowers users with a diverse array of analytical capabilities, enhancing their data comprehension and enabling more informed data-driven decisions, all while upholding the paramount principles of data security and privacy. DT is designed to address two core concerns:

- Monitoring sensitive data,
- Regulating data usage.

By leveraging classified data from database discovery application—categorized into sensitive and non-sensitive—DT produces visual representations using corresponding project names, displayed through intuitive charts. The product's primary dashboard page offers a concise overview of the data content from the ten most recent scanned projects, enabling easy access to critical information.

## WHY DATA TOUCH?

### NEEDS

vs

### DATA TOUCH SOLUTIONS

Hard to manage and  
analyze large data  
environments



Managing & Analyzing  
large data environments  
by gathering

Hard to detect sensitive  
and non-sensitive data



Classifying data as  
sensitive and  
non-sensitive

Difficulty keeping track of  
data changes



Monitoring the entire life  
cycle of data

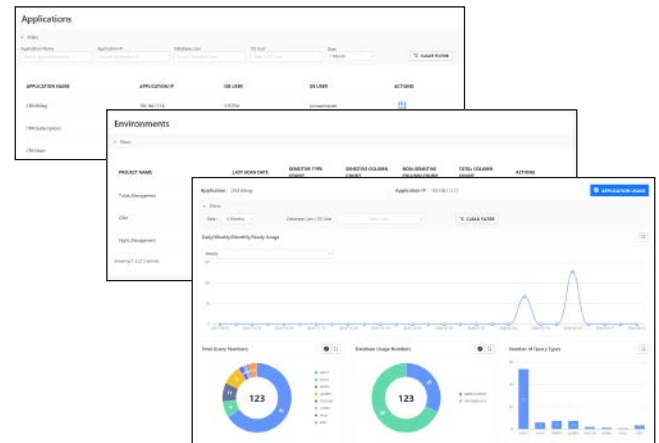
Not knowing who  
accessed the data



Analyzing data with  
access details and  
analytic visuals

# DATA TOUCH TOOL CAPABILITIES

- Analyze previously detected and classified data (sensitive and non-sensitive), and visualize them on graphs
- Showing the access of each application to any data in the given time interval and finding out from whom and how the data is used with all query details
- Tracking the lineage of data and visualizing the whole life cycle of it
- Reporting (all visually provided data)
- Data heatmaps
- Abnormal user behavior detection through AI and machine learning



Analyze Sensitive Data in Large Data Warehouses



Following Usage of The Data



Tracking The Entire Life Cycle of Sensitive Data



Data Security Tracking & Anomaly Detection



Reporting & Log



Data Analytics



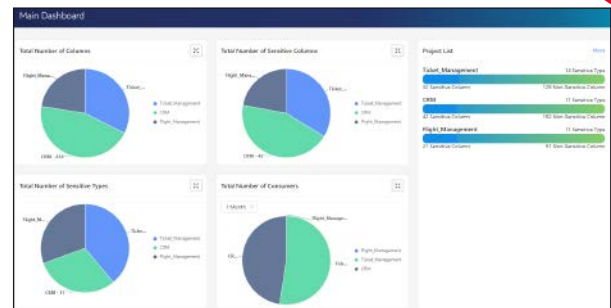
Notification Management



# DATA TOUCH FEATURES

## VISUALIZATION

Shows all projects (from Discovery) in the same environment with detailed information on purpose-built charts. It ranks the projects according to their sizes and creates graphs of classified data (sensitive and non-sensitive), sensitive types and consumers on the dashboard.



DATABASE NAME	SCHEMA NAME	TABLE NAME	COLUMNS	SENSITIVE TYPE	ACTIONS
SPRINGERBATCH	PRDDB	ACCOUNT	Balance	1	
SPRINGERBATCH	PRDDB	ACCOUNT	ACCOUNTID	2	
SPRINGERBATCH	PRDDB	ACCOUNT	CARDNUMBER	3	
SPRINGERBATCH	PRDDB	ACCOUNT	ACCOUNTID	4	
SPRINGERBATCH	PRDDB	APP	STATUS	5	

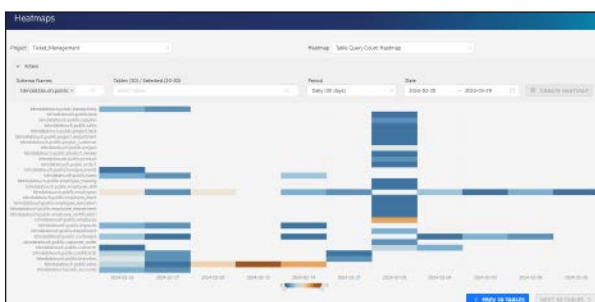
## DATA USAGE

Shows projects (scanned by Discovery), consumers (who touched the data), in detail how and when they touched. By entering a date range, these details can be filtered. Tables can be filtered and exported via Excel

## DATA ANALYSIS

Shows the details of the queries for the project in three ways:

- Query details,
- Queries made,
- Queries for sensitive types.



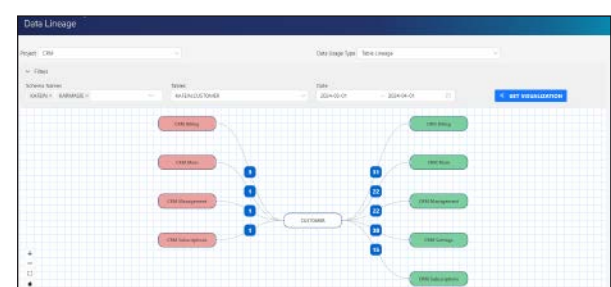
## DATA HEATMAPS

Creates different heatmaps with predefined options for more detailed analysis of all kinds of data within the application.

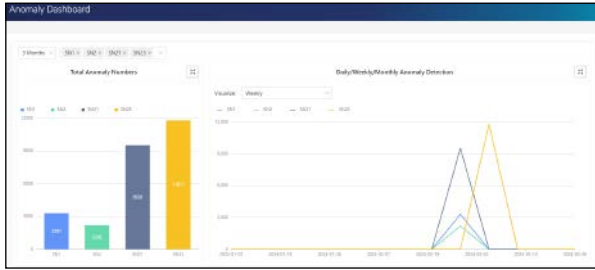
- **Table Query Count Heatmap:** Shows the total query number for each table for a specific date.
- **Application Count Heatmap:** Shows the total query number from each application to each table.
- **Table Action Type Count Heatmap:** Shows the total query number by action type (select, update, delete, etc.) for each table.
- **Sensitive Type Time Heatmap:** Shows the total query number within the selected period for each sensitive type.

## DATA LINEAGE

- Data Lineage creates a map showing all stages, changes, and relationships a table, column, or application goes through, starting from its source
- It provides the ability to track the paths where data is created, used, modified, and transferred
- The solution provides detailed understanding of data origin, usage, and changes within data management processes.



# DATA TOUCH FEATURES



## ANOMALY DETECTION

- The Anomaly Engine can detect abnormal conditions from the perspective of users or data sources by analyzing usage data from data sources in real-time.
- Its purpose is to identify unusual behaviors, outliers, or potential threats that may indicate errors, security breaches, or performance issues

## DATA SOURCE SPECTRUM REPORTS

- Provides extensive user privilege reports for various databases including Oracle, MS SQL, PostgreSQL, MySQL and MongoDB
- Reports include user roles, altered privileges, login times, number of administrators and many more.

GRANTEE	TABLE_NAME	OWNER	PRIVILEGE	DATASOURCE_DETAILS	COUNT_OF_SQLRISK_TIMESTAMP_ORA_OBJECT_PRIVILEGES
APPOSSYS	WUM_CAPABILITY_ARRAY	SYS	EXECUTE	oracle_207:ORACLE:192.168.185.207:KE:1521:2024-07-25 11:52:40	1
APPOSSYS	WUM_CAPABILITY_OBJECT	SYS	EXECUTE	oracle_207:ORACLE:192.168.185.207:KE:1521:2024-07-25 11:52:40	1
APPOSSYS	DRMC_WEM	SYS	EXECUTE	oracle_207:ORACLE:192.168.185.207:KE:1521:2024-07-25 11:52:40	1
APPOSSYS	V_PARAMETER	SYS	SELECT	oracle_207:ORACLE:192.168.185.207:KE:1521:2024-07-25 11:52:40	1
APPOSSYS	V_SYSMETRIC	SYS	SELECT	oracle_207:ORACLE:192.168.185.207:KE:1521:2024-07-25 11:52:40	1
APPOSSYS	V_ACTIVE_SERVICES	SYS	SELECT	oracle_207:ORACLE:192.168.185.207:KE:1521:2024-07-25 11:52:40	1
APPOSSYS	V_SWIM_PARAMETER	SYS	SELECT	oracle_207:ORACLE:192.168.185.207:KE:1521:2024-07-25 11:52:40	1
APPOSSYS	V_SWIM_DB_MODE	SYS	SELECT	oracle_207:ORACLE:192.168.185.207:KE:1521:2024-07-25 11:52:40	1
APPOSSYS	V_SWIM_PESERVICE	SYS	SELECT	oracle_207:ORACLE:192.168.185.207:KE:1521:2024-07-25 11:52:40	1
APPOSSYS	GV_SWIM_DS_MOOT	SYS	SELECT	oracle_207:ORACLE:192.168.185.207:KE:1521:2024-07-25 11:52:40	1
APPOSSYS	V_CONTAINERS	SYS	SELECT	oracle_207:ORACLE:192.168.185.207:KE:1521:2024-07-25 11:52:40	1
APPOSSYS	DBA_PDBS	SYS	SELECT	oracle_207:ORACLE:192.168.185.207:KE:1521:2024-07-25 11:52:40	1

LOGINTIME	STATUS	USERNAME	HOSTNAME	IP	PORT	PROGRAM	DATASOURCE_DETAILS	SQLRISK_TIMESTAMP
2024-07-25T11:52:40.000000	Success	sys	192.168.185.207	192.168.185.207	1521	SQLService	oracle_207:ORACLE:192.168.185.207:KE:1521:2024-07-25 11:52:40	2024-07-25 11:52:40
2024-07-25T11:52:40.000000	Success	sys	192.168.185.207	192.168.185.207	1521	SQLService	oracle_207:ORACLE:192.168.185.207:KE:1521:2024-07-25 11:52:40	2024-07-25 11:52:40
2024-07-25T11:52:40.000000	Success	sys	192.168.185.207	192.168.185.207	1521	SQLService	oracle_207:ORACLE:192.168.185.207:KE:1521:2024-07-25 11:52:40	2024-07-25 11:52:40

# GET IN TOUCH

Phone: +90 (212) 924 2030

Mail: [info@kafein.com.tr](mailto:info@kafein.com.tr)

Web: [www.kafein.com.tr](http://www.kafein.com.tr)

